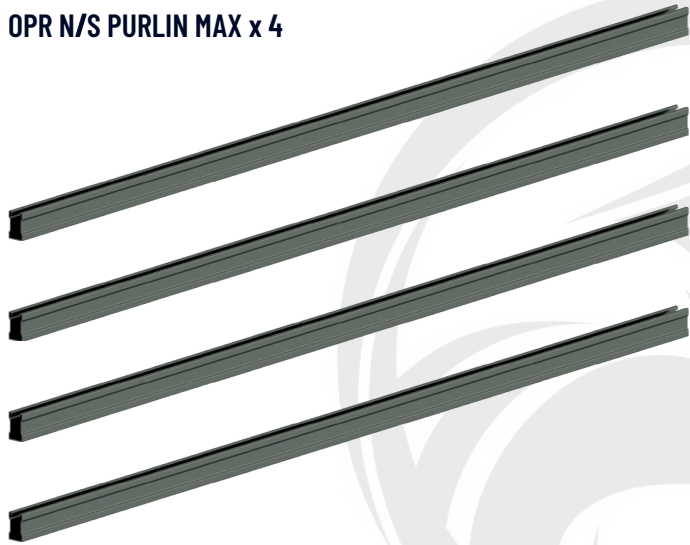




# RAIL KIT



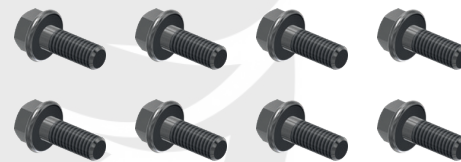
**OPR N/S PURLIN MAX x 4**



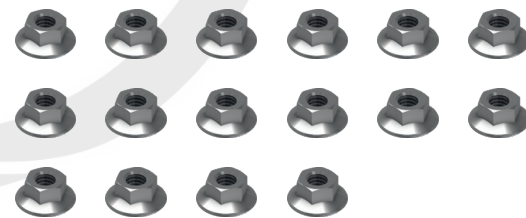
**OPR E/W U-BOLT x 4**



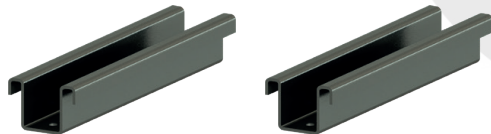
**OPR SPLICE BOLTS x 8**



**OPR 3/8" NUTS x 16**



**OPR STRUCTURAL RAIL BRACKET x 2**



## Description

- Custom purlin design offers higher strength at a lower weight than comparable unistrut
- Purlins connect to round tubes using U-bolts
- Purlin profile designed for universal mid-clamps and end-clamps
- U-bolt design allows purlins to adjust to any slope
- Standard profile 1-5/8" x 2-7/16"
- Structural rail bracket connects purlins together
- Splice design convenient for shipping in box trucks

QTY.	PART DESCRIPTION	PART NUMBER
4.0	OPR NS PURLIN MAX	OPR-821-11-215-093
2.0	OPR RAIL BRACKET	OPR-821-10-115-014
4.0	OPR EW U-BOLT	OPR-831-050-U04
8.0	OPR SPLICE BOLTS	OPR-831-050-B01
16.0	OPR 3/8" NUTS	UNV-031-050-N38

\* Magni coated hardware