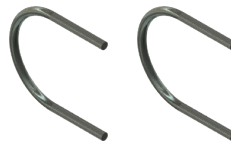




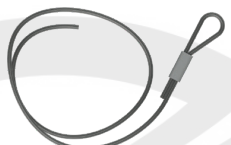
FOUNDATION KIT



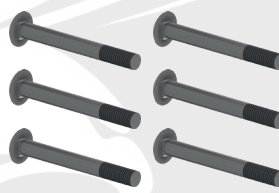
OPR E/W U-BOLT x 2



UNV CABLE BRACE



OPR CARRIAGE BOLTS x 6



OPR BRACING BOLTS x 5



OPR 3/8" NUTS x 4



OPR FRONT LEG



OPR NORTH BRACKET



OPR LATERAL BRACKET



OPR 1/2" NUTS x 11



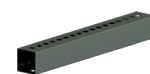
OPR UNIVERSAL EXTERNAL LEG



OPR UNIVERSAL INTERNAL LEG



OPR LATERAL BRACE EXTERNAL



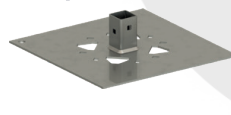
OPR LATERAL BRACE INTERNAL



OPR 18" (rear)
Baseplate



OPR 12" (front)
Baseplate



Description

Front Leg Foundation

- Preassembled, independently power adjustable support
- Use standard hand-held impact tool
- 24" to 51" height adjustment
- 5,000 static / 2,500 dynamic load
- Reduces site prep and grading
- Install on uneven terrain
- No post hole digging

Rear Leg Foundation

- Telescoping leg support to 101"
- North / south slope (up to 10°); East / west slope (to 5°) or staircase layout
- Foundations designed to fit any load criteria
- Support legs adjust to tilt from 15-35°

QTY.	PART DESCRIPTION	PART NUMBER
1.0	OPR 18" FOUNDATION MAX	UNV-011-03-345-018
1.0	OPR UNIVERSAL EXTERNAL LEG	OPR-821-14-215-054
1.0	OPR UNIVERSAL INTERNAL LEG	OPR-821-14-215-060
1.0	OPR NORTH BRACKET	OPR-821-10-115-012
1.0	OPR 12" FOUNDATION MAX	UNV-011-03-345-012
1.0	OPR FRONT LEG	OPR-810-11-530-051
1.0	OPR LATERAL BRACE EXTERNAL	OPR-821-14-215-018
1.0	OPR LATERAL BRACE INTERNAL	OPR-821-14-215-078
1.0	OPR LATERAL BRACKET	OPR-821-09-115-008
1.0	UNV CABLE BRACE	OPR-811-500-C18
6.0	OPR CARRIAGE BOLTS	OPR-831-050-X45
5.0	OPR BRACING BOLTS	OPR-831-050-B03
11.0	OPR 1/2" NUTS	OPR-831-050-N12
2.0	OPR EW U-BOLT	OPR-831-050-U04
4.0	OPR 3/8" NUTS	UNV-031-050-N38

* Magni coated hardware